



Savid Therapeutics, Inc announces Preclinical Data and Details on their Novel Antibody Mimetic Drug Conjugate (AMDC) Platform with in-vivo proof of concept for the treatment of HER2 positive breast cancer with a proprietary photo-activated payload (STI-001).

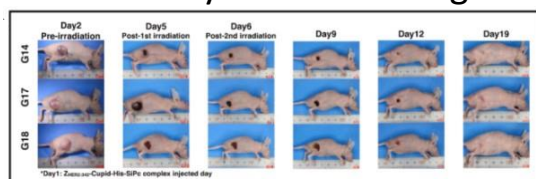
January 24, 2022

TOKYO, Japan, January 21, 2022 – Savid Therapeutics, Inc., (“Savid” or the “Company”) today announced the publication of preclinical data from the research funded by Savid at the University of Tokyo Laboratory for Systems Biology and Medicine. This data illustrates that the Savid Cupid-Psyche AMDC platform provides rapid, stable, and high-yield manufacture of therapeutics against multiple cancer targets.

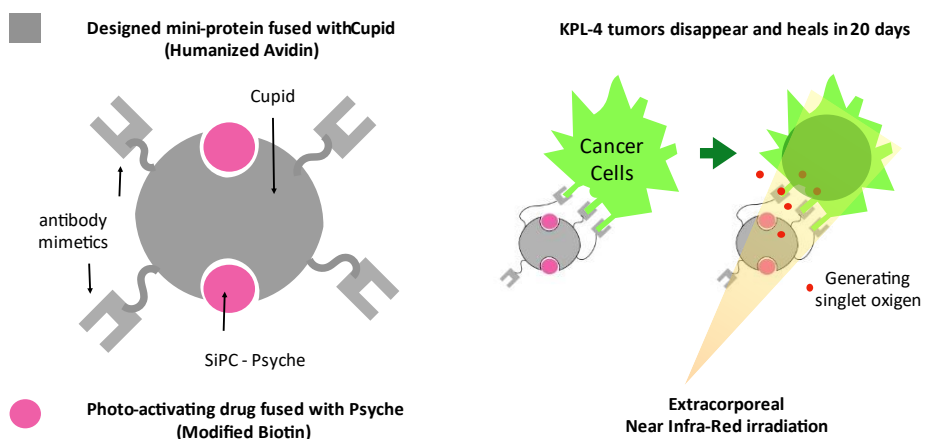
“The Savid Cupid-Psyche system is a proprietary platform capable of delivering multiple payloads to multiple cancer targets. This technology enables simple streamlined development of specific therapeutics and combination therapies with multiple therapeutic payloads. In addition to this foundational research, Savid has unpublished data for multiple other tumor associated antigen targets” said Masanobu Tsukagoshi, Chief Executive Officer at Savid.

Savid is advancing STI-001 the HER2/SiPc asset described in the current publication in therapies for metastatic breast cancer, esophageal and gastric cancers and extramammary Paget’s disease. Savid is initially partnering with experts in the development proprietary designed proteins, nanobodies (VHH), affibodies, and other targeting ligands to treat advanced cancers including metastatic breast cancer, unresectable head and neck cancer, non-small cell lung cancer and pancreatic cancer and triple negative breast cancer. The Savid platform enables targeted delivery of multiple types of therapeutic payloads including photoimmunotherapy, cytotoxic, radioisotope and immune system activating therapeutics.

Antibody Mimetics Drug Conjugate STI-001



Xenograft mice with Her2 positive human cancer cells treated with anti-Her2 AMDC with photo-activating compound



“Our proprietary AMDC platform has been specifically designed and developed using a modified avidin biotin conjugation system with low immunogenicity in humans. This is a flexible system that insures a tight and specific binding of targets and payloads. The Savid Cupid-Psyche system is designed for use with validated targets and already marketed payloads to de-risk development or in combination to novel targets, linkers and payloads. The flexibility and robustness of the Cupid-Psyche platform overcomes much of the complexity of the manufacturing process and the limitations of therapeutic efficacy due to off target toxicities seen with antibody drug conjugate and bispecific antibody platforms. This single platform is capable of delivering combination therapies to multiple targets unleashing the power of multiple payloads and therapeutic modalities,” said Michael Chansler, Vice President of Business Development at Savid.

Tatsuhiko Kodama, M.D. PhD., inventor of Savid’s technology said, “We believe that our AMDC platform has the potential to overcome the challenges of treating advanced and metastatic cancers and help patients in need who currently do not respond to the current standards of care.”

Savid Therapeutics will be introducing the Cupid-Psyche technology at the upcoming 12th Annual World ADC Conference in London, UK March 29 to April 1, 2022.

For additional information, visit www.savidtherapeutics.com.

Contact Savid: info@savidtherapeutics.com