

# INSTITUTE FOR GLOBAL PROMINENT RESEARCH KICKOFF SYMPOSIUM

November 14 Mon. 10:00-17:05 KEYAKI GRAND HALL, CHIBA UNIVERSITY

Chiba University established the Institute for Global Prominent Research (IGPR) to facilitate the advancement of our world level research as well as to implement a research promotion system for long-term on going creation of research groups with novelty and originality. IGPR selected three research projects to be promoted intensively and twelve projects to be incubated.

At this symposium, these projects will be introduced by oral presentation or by posters. We also arrange a plenary talk and invited talks by members of the advisory board of IGPR. Researchers and graduate students are encouraged to attend this Symposium.

Admission  
Free  
(excepting "Network Session")

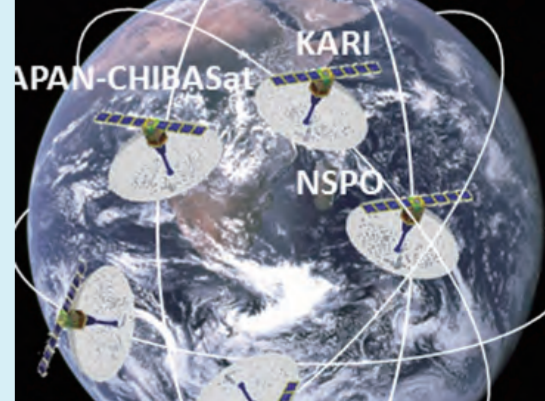
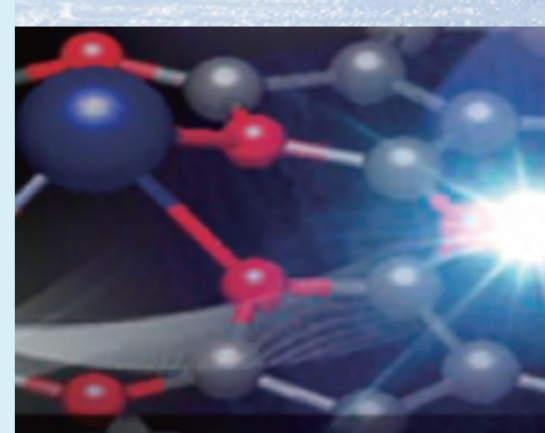
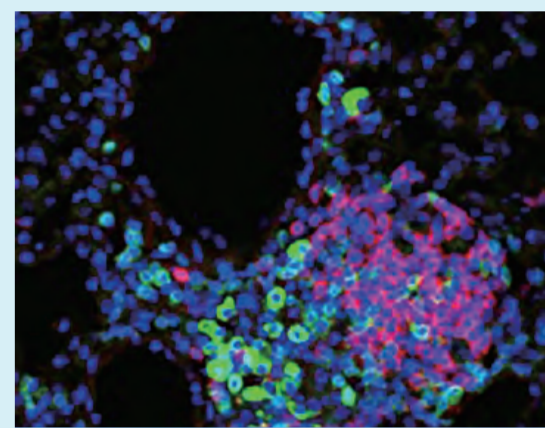
## PROGRAM

### MORNING PART in Japanese

10:00-10:25 OPENING SESSION	Welcome Address	Minoru Seki, Vice President of Chiba University
	Guest Speech	Ministry of Education, Culture, Sports, Science and Technology (TBD)
	Opening Remarks	Takeshi Tokuhisa, President of Chiba University
10:25-11:25 Keynote Lecture	<b>Toshio Hirano</b> , President of National Institute for Quantum and Radiological Science and Technology "Administration of Research University"	
11:25-12:00 Invited Lecture 1	<b>Kensuke Miyake</b> , Professor of the Institute of Medical Science, The University of Tokyo "Molecular Mechanism Sensing Nucleic Acids in Innate Immunity"	

### AFTERNOON PART in English

13:15-14:05 Research Project Presentation 1	<b>Toshinori Nakayama</b> , Prof., Graduate School of Medicine "International Center of Excellence in the Mucosal Immunology and Innovative Allergy Therapeutics at Chiba University"	
	<b>Aya Ishihara</b> , Associate Prof., Graduate School of Science "High-Energy Hadron Astrophysics led by the neutrino astronomy with the world-best sensitive instruments and massive numerical simulations of cosmic dynamics"	
14:05-14:40 Invited Lecture 2	<b>Marc Koper</b> , Prof., Leiden University "Multiple proton-coupled electron transfer for the electrochemical generation of fuels"	
14:40-15:35 POSTER SESSION 2F	All Projects promoted by GP, Tenure Track Researchers' involved in GP	
15:35-16:00 Research Project Presentation 2	<b>Takashige Omatsu</b> , Prof., Graduate School of Advanced Integration Science "Innovative Materials Science Pioneered by Chiral Photonics"	
16:00-17:00 Incubator Project Presentation	<b>Kazuki Saito</b> , Prof., Graduate School of Pharmaceutical Sciences "Phytochemical Plant Molecular Sciences"	
	<b>Hideaki Haneishi</b> , Prof., Research Center for Frontier Medical Engineering "Multimodal Medical Engineering"	
	<b>Sri Sumantyo J.T.</b> , Prof., Center for Environmental Remote Sensing "Innovative Microwave Remote Sensing"	
17:00-17:05 Closing Remarks	<b>Ryoji Matsumoto</b> , Vice President of Chiba University	
17:30-19:00 Network Session	3F-Reception Room *For researchers involved in GP (1,000yen)	



## SECRETARIAT